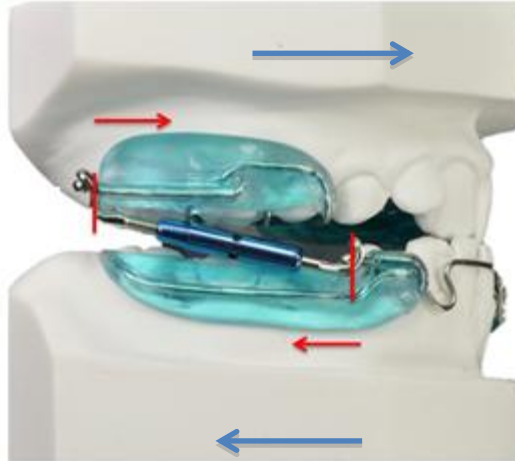


## Mounting protocol of adjustable system PUL3

The bite wax must register the most posterior position of the mandible.

At the upper, the system has to be mounted closely to the splint to push forward the maxilla.



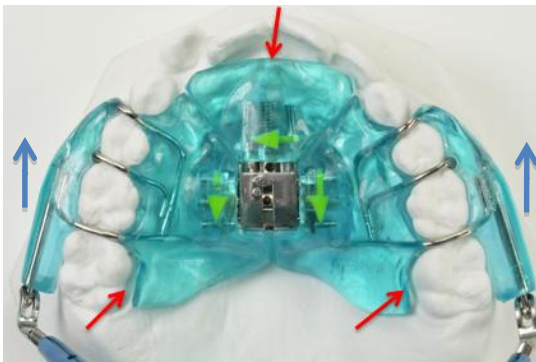
At the lower, the system has to be mounted closely to the ball-clasp to prevent mandibular protrusion.

## Designing the splints of PUL3

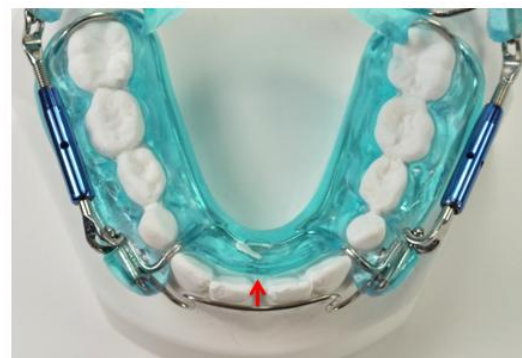
The integrated coil-spring is activated by traction: mandibular protrusion by the patient activates the coilspring which enables pre-maxillary advancement.



Anterior acrylic has to be rounded behind the upper incisors to enable their alignment.



Metal frame passes mesially to 16 and 26 to prevent strong anchorage and enable pre-maxillary advancement.



At the lower, acrylic is grinded behind incisors to enable their uprighting.