

The upper vestibular arch:
Its negative effects!

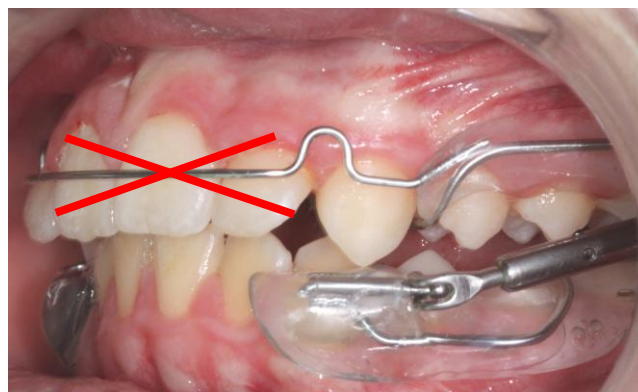
The correction of class II (about 6mm) with the PUL (without upper vestibular arch)

is done by **3** simultaneous actions:



$\frac{1}{3}$ by expansion of the maxilla + $\frac{1}{3}$ by distalisation of the lateral sectors + $\frac{1}{3}$ by mandibular advancement

The vestibular arch at the upper maxilla prevents these three simultaneous actions!



It has several negative actions on the correction of the Class II and is one of the main causes of failure:

- Prevents the expansion of the maxilla.
- Prevents distalization of upper lateral sectors.
- Induces rabbiting of upper incisors.
- Induces a tilting of the occlusal plane downward and forward.
- Induces vestibulisation of mandibular incisors.

These are the main detrimental effects of conventional activators.