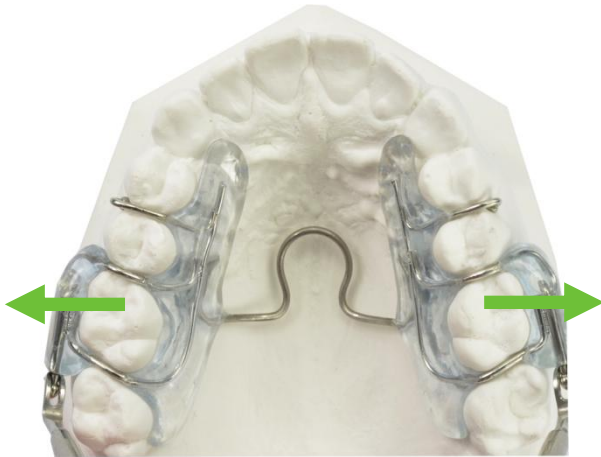


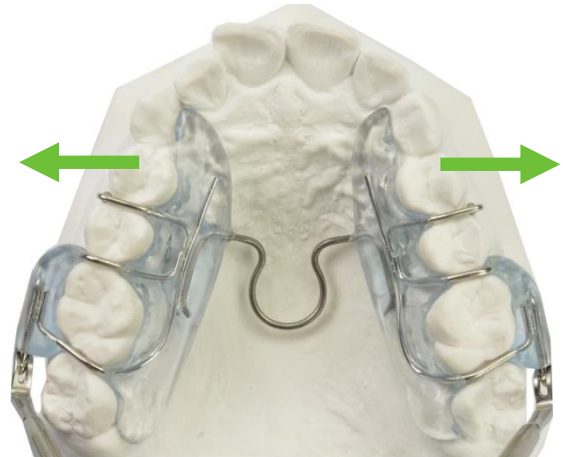
PUL System 4D Harmonizer
Functional - Sagittal - Transverse - Vertical

Necessary prescription to permit bonding pads from 14 to 24 in the same time of the PUL:

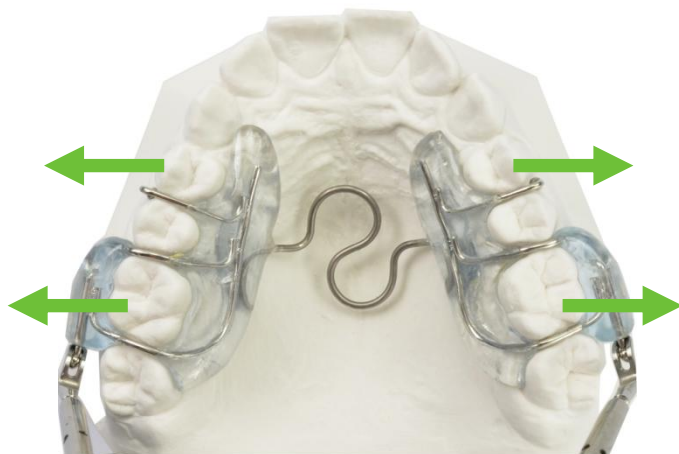
- frame before the 6 upper
- ball head clasps between 4 & 5



TMA Coffin loop (omega loop) with distal opening of the loop for posterior expansion.



TMA Coffin loop (omega loop) with mesially opening for anterior expansion.



TMA Coffin loop in S for posterior and anterior expansion.



Hooks for anterior elastic that can be cut to permit bonding pads from 14 to 24 in the same time of the PUL.